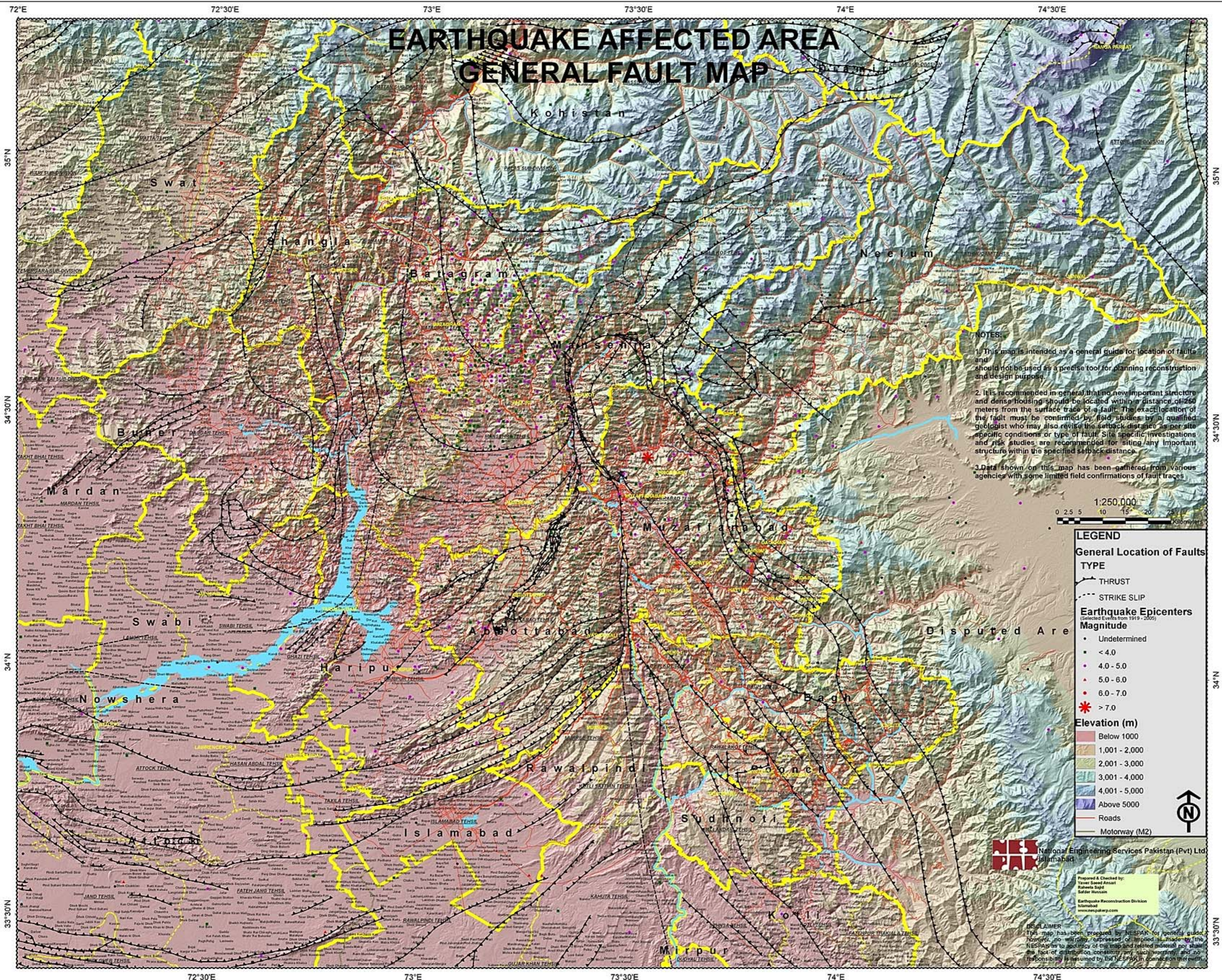
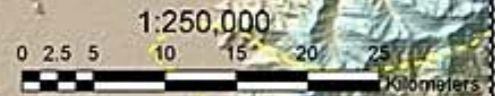


# EARTHQUAKE AFFECTED AREA GENERAL FAULT MAP



**NOTES:**

1. This map is intended as a general guide for location of faults and should not be used as a precise tool for planning reconstruction and design purposes.
2. It is recommended in general that no new important structure and dense housing should be located within a distance of 250 meters from the surface trace of a fault. The exact location of the fault must be confirmed by field studies by a qualified geologist who may also revise the setback distance as per site specific conditions or type of fault. Site specific investigations and risk studies are recommended for siting any important structure within the specified setback distance.
3. Data shown on this map has been gathered from various agencies with some limited field confirmations of fault traces.



**LEGEND**

**General Location of Faults**

**TYPE**

- THRUST
- STRIKE SLIP

**Earthquake Epicenters**  
(Selected Events from 1919 - 2005)

**Magnitude**

- Undetermined
- < 4.0
- 4.0 - 5.0
- 5.0 - 6.0
- 6.0 - 7.0
- > 7.0

**Elevation (m)**

- Below 1000
- 1,001 - 2,000
- 2,001 - 3,000
- 3,001 - 4,000
- 4,001 - 5,000
- Above 5000

Roads  
Motorway (M2)

**NESPAP** National Engineering Services Pakistan (Pvt) Ltd  
Islamabad

Prepared & Checked by:  
Yameer Saad Ansari  
Rahim Saif  
Safdar Hussain

Earthquake Reconstruction Division  
Islamabad  
www.nespap.gov.pk

**DISCLAIMER**  
This map has been prepared by NESPAP for general guide, however, no warranty, expressed or implied is made by the NESPAP as to accuracy of the map and related material nor shall the fact of distribution constitute any such warranty, and no responsibility is assumed by the NESPAP in connection therewith.